



Lena Henke

Auf dem Asphalt
botanisieren gehen

April 30 to July 30, 2022

Klosterfelde Edition



Throughout her practice, Lena Henke produces sculptures and installations that intimately recast histories of modernism, design, and urban planning. Her process begins with research into the physical spaces in which she lives, works, and exhibits her artworks. Henke's engagements with site-specificity result in sculptures whose often appropriated forms are at once rigorous and flirtatious. Her works challenge the patriarchal legacies of modern culture while bringing the lived experiences of gender to their surfaces. For the past decade, Henke has produced a body of work that explores her personal relation to the architecture and urban design of New York City, where she has continuously lived and worked. For her exhibition at Klosterfelde Edition, Henke shifts her geographic focus to the urban space of Berlin, where she has temporarily relocated. Henke's new set of sculptures excavates the local histories and household artefacts of the Hansaviertel, a neighborhood comprised of postwar modernist social housing where the artist's studio is currently located.

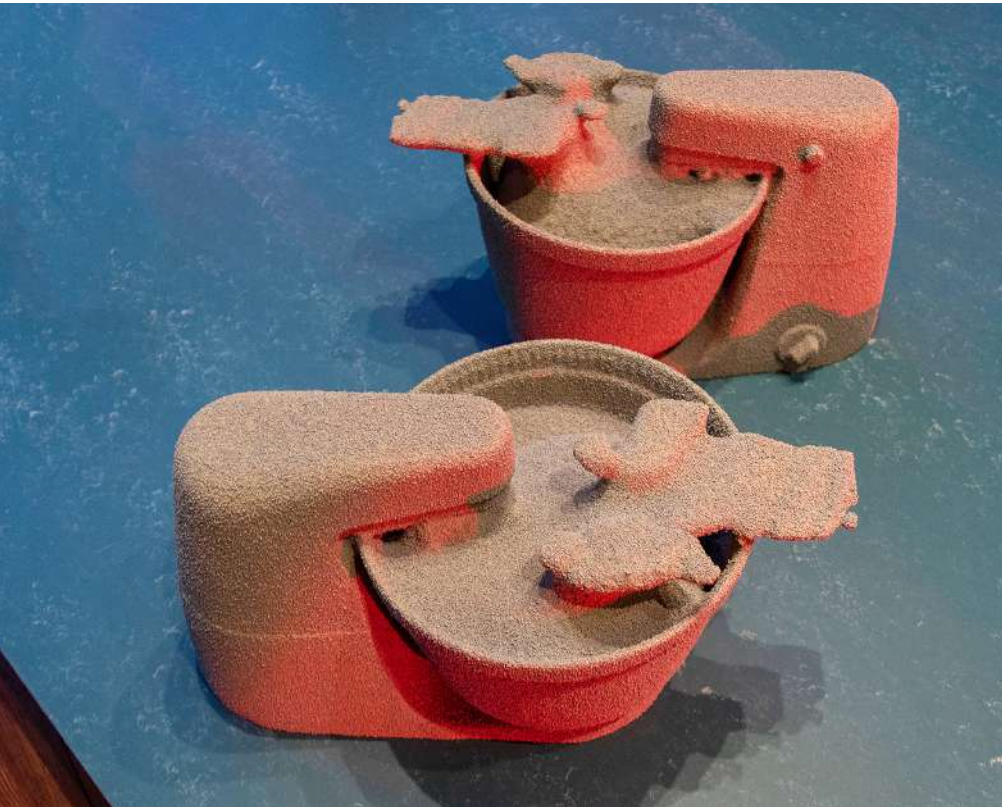
Situated between the Tiergarten and the River Spree, the Hansaviertel was once a densely inhabited area with a strong Jewish presence, before being reduced to rubble in World War II. Amid postwar efforts to reconstruct derelict neighborhoods and address housing shortages, West Berlin organized the Internationale Bauausstellung (Interbau) in 1957, in which the top architects of the time—Walter Gropius, Oscar Niemeyer, Alvar Aalto, Werner Düttmann, Le Corbusier, and others—were commissioned to redesign the Hansaviertel. At the core of the Hansaviertel project was an attempt to reshape postwar life through architecture, technology,



and the city's nature. The crisp geometries of new modernist apartments opened onto the Tiergarten's Stadtgrün, while their interiors were fitted with the latest technologies like underfloor heating and rubbish chutes. The new urban district embodied Cold War aesthetic ideologies, as modernist design served the Western Bloc's democratic and capitalist ideals. As then Chancellor Konrad Adenauer announced at the time, the Hansaviertel "expresses a connection to the people of the free world." Through collaboration with international proponents of modernist design to rebuild what the war destroyed, the Hansaviertel was framed as West Berlin's architectural emancipation from its Nazi past into the foundations of a liberated society.



Klosterfelde Edition



While looking at archival photographs of Hansaviertel apartments, Henke noticed two recurring features. She observed Braun appliances in numerous interiors, which evoked distant memories of growing up around Braun products in West Germany. Under the direction of the renowned designer Dieter Rams, Braun manufactured fashionable household products whose innovative designs revamped postwar domestic life. In 1957, Braun participated in Interbau; of the model apartments on view in the Hansaviertel, sixty percent were furnished with Braun products. What united Braun and the Hansaviertel was their shared renewal of modernism in postwar design. The politics of this return was exemplified by Ram's oft-cited design principle, "Back to purity, back to simplicity!" In equipping domestic spaces with sleek surfaces and functional forms, both Braun and the Hansaviertel sought to expunge post-fascist society with a return to aesthetic simplicity and moral purity. The new apartments and appliances

forged blueprints for new ways of living, laboring, and consuming, with technologies of the future at the center of the home.

Henke additionally noticed an awkwardness around kitchen spaces in photographs of Hansaviertel apartments. Minimal and narrow, these kitchens often included a retractable curtain, which provided a backdrop to the leisure space of the living room while hiding the kitchen's gendered labor. For Henke, these concealable kitchens illustrated the power relations of male architects dictating women's domestic labor through design, rendering their housework and care work invisible. And unsurprisingly for the





time, the protagonist designers of the Hansaviertel and Braun were all men. A decade later, the feminist movement of the 1970s took aim at the kitchen by challenging the patriarchal alignment of women with the domestic realm, as evident in artworks such as Martha Rosler's *Semiotics of the Kitchen* (1975). In her manifesto for the remuneration of women's housework, Silvia Federici diagnosed the problem of feminism as "how to bring this struggle out of the kitchen and into the streets." In *Auf dem Asphalt botanisieren gehen* ["To go botanizing on the asphalt"], Lena Henke examines how long histories of design continue to affect gendered experiences of labor and urban space, from the perspective of kitchen appliances appropriated and reproduced into a sculptural scenography. To compose her new series of sculptures on view, Henke digitally reworked four iconic Braun appliances of the

postwar era: the KM 3 "Küchenmaschine" stand mixer (1957), the MX 3 mixer (1958), the MPZ 2 "Citromatic" citrus press (1972), and the KF 20 "Aromaster" coffee machine (1972). Each sculptural edition is complemented by the artist's custom-designed packaging of black carton boxes with individual labels, installed on the counter and shelving adjacent to the gallery's entrance. The sculptures' colors are derived from vintage Braun advertisements, while their skin-like rubber surfaces emphasize the appliances' biomorphic shapes. Henke has retained the physical glitches that occur in the 3D printing process, which materialize on the sculptures as drips, leaks, and overflows. Upon closer inspection, the appliances appear as bodies on the verge of spilling over, their tumescent forms threatening the integrity of their modernist design. In her installation of the sculptures, Henke engages

with the physical site of Klosterfelde Edition and its surrounding environs of Potsdamer Straße. The space was originally a lived-in apartment. It was converted into a stationary store, and ultimately a gallery, through the removal of half a floor, which provided a street-level entrance while expanding the height of the narrow space. Henke has repeated a parallel gesture by enlarging her appliance sculptures 1.5 times the size of the Braun originals. Through digitally resizing the kitchen devices, Henke emphasizes their modernist architectural, building-like forms while undermining their domestic functionality; they become solid objects, too big to be used.

Henke has arranged the appliance sculptures on a ramp descending from the small room at the back of the gallery, which was formerly a kitchen. The ramp is covered in green linoleum, a material frequently used for postwar kitchen floors. The ramp extends from the gallery's former kitchen toward the street, conjuring feminist political entanglements of the personal and public realm. The installation stages further relations to the

sidewalk, as if the appliances were architectural models atop a city block. Henke has excerpted the exhibition's title *Auf dem Asphalt botanisieren gehen* from Walter Benjamin's *Das Passagenwerk* [The Arcades Project] (1927-1940), in which Benjamin characterizes the figure of the flâneur as an urban wanderer who "goes botanizing on the asphalt." While "botanizing on the asphalt" recalls the Hansaviertel's intermixing of concrete architecture and the Tiergarten's nature, the title further excavates the history of pedestrian movement on Potsdamer Straße, a heavily trafficked street associated with the flânerie surrounding theater, entertainment, nightlife, and prostitution in both prewar and contemporary Berlin. Henke invokes the specters of Potsdamer Straße's layered histories by installing a red-tinted spotlight, whose roving light beam shines from the gallery's former kitchen space on the appliance sculptures, the exhibition viewers, and onto the street. Conjoining domestic interiors and urban publics by imaginatively navigating across Berlin's pasts and present, Henke's *Auf dem Asphalt botanisieren gehen* subtly unearths the gendered exclusions of labor and care, that lie beneath the collective fantasies of reinhabiting shared space and returning to so-called normal life.

Text by Carlos Kong



1 Interbau Berlin 1957. Amtlicher Katalog der Internationalen Bauausstellung Berlin 1957, S. 14.

2 Klaus Kemp and Keiko Ueki-Polet (Hrsg.), *Less and More: The Design Ethos of Dieter Ram* (Berlin: Die Gestalten Verlag, 2009), S. 351.

3 Silvia Federici, *Wages Against Housework* (Power of Women Collective and Falling Wall Press, 1975), S. 4.

4 Klaus Kemp. *Dieter Rams. Werkverzeichnis* (Berlin: Phaidon Verlag, 2020).

5 Walter Benjamin, *Gesammelte Schriften*, Vol. I.2 (Frankfurt a.M.: Suhrkamp Verlag, 1983), S. 538.



Klosterfelde

100% 100% 100%



Lena Henke

Every one of my buildings begins with an Italian journey (Kaffee), 2022

The mind is like an umbrella Its most useful when open (Saftpresse), 2022

Better be old iron than new tin (Mixer), 2022

Form Follows Feminine (Kueche), 2022

Each is an Edition of 6 plus 2 AP



Lena Henke

Every one of my buildings begins with an Italian journey (Kaffee), 2022

PU-foam, Pigment, Rubber

58.8 x 32.0 x 33.9 cm

Weight: 5,26 kg

Signed, dated and numbered on custom made box

Produced by Kunstgiesserei St. Gallen

Edition of 6 plus 2 AP



Lena Henke

The mind is like an umbrella Its most useful when open (Saftpresse), 2022

PU-foam, Pigment, Rubber

29.8 x 26.3 x 42.1 cm

Weight: 2,21 kg

Signed, dated and numbered on custom made box

Produced by Kunstgiesserei St. Gallen

Edition of 6 plus 2 AP



Lena Henke

Better be old iron than new tin (Mixer), 2022

PU-foam, Pigment, Rubber

39.1 x 19.7 x 22.4 cm

Weight: 1,86 kg

Signed, dated and numbered on custom made box

Produced by Kunstgiesserei St. Gallen

Edition of 6 plus 2 AP



Lena Henke

Form Follows Feminine (Kueche), 2022

PU-foam, Pigment, Rubber

35.3 x 63.8 x 36.3 cm

Weight: 8,22 kg

Signed, dated and numbered on custom made box

Produced by Kunstgiesserei St. Gallen

Edition of 6 plus 2 AP

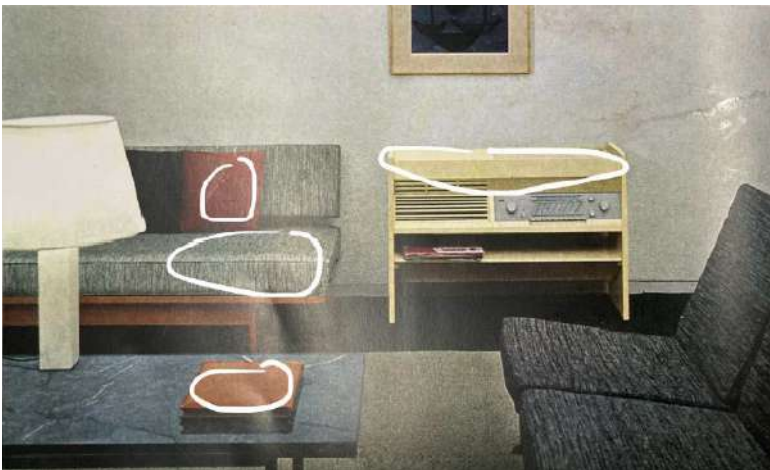
With kind support by Bortolami, New York; Layr, Vienna and Pedro Cera, Lisbon.
A new publication will accompany the exhibition and be launched this fall.
Realized with support of the Berlin Senate.

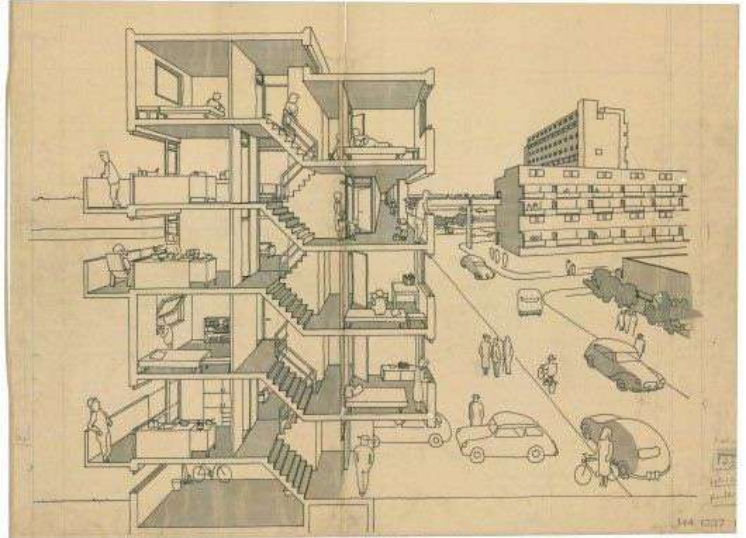
Photos by GRAYSC; Silke Briel © Lena Henke & Klosterfelde Edition



Klosterfelde Edition - former apartment which was converted into a shop by removing half of the floor to create a street level store, including large windows. It used to be a stationary shop before the gallery rented it. Building was modernized, a washing kitchen was added in 1925.

Keywords - blender - sharp/blade - pulverizing - coffee machine - heat, extraction - juicer - pressure - mixer - merging - softness - liquid - rotation - speed - transformation - aging - stability - reliability - built to last, be part of the family - relationship to home/kitchen/family or socialization - modernizing - hiding the labor/hiding the body - humorous approach - female - milk, bread, food items - sculpture editions surface ideas - emerging handprint - buttons pushed in/stuck on - melting effect - leisurama - scaling based on gender - fill the void

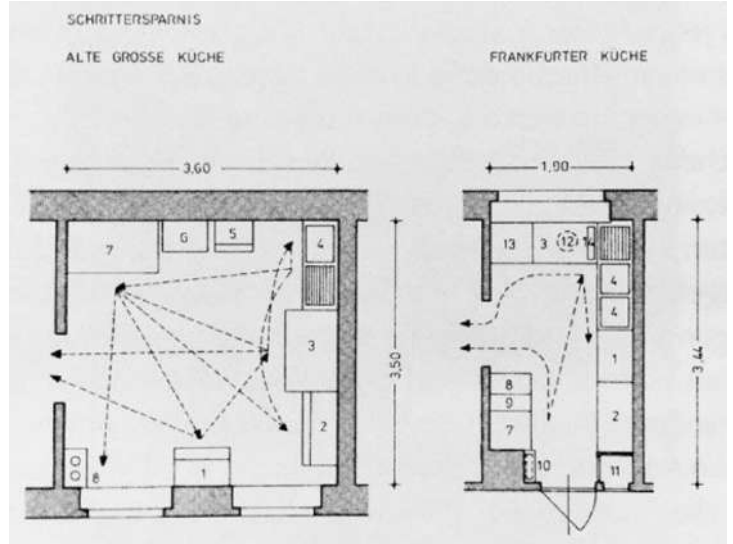




The **Hansaviertel** was built by men, their planning was according to common conceptions of heteronormative gender roles which still affect the daily lives of residents today. The apartments and especially the kitchens were **designed** through this binary of perceived **male** and **female**/family roles. Additionally, kitchen appliances from the 1950s and 60s were designed mainly by men (such as Dieter Rahms) for an almost exclusively female clientele.

My **kitchen** project focuses specifically on the history of Berlin's Hansaviertel, while engaging with the continuous issue of the invisibility of **female (care) work** and raising questions about technological developments such as **smart homes** and computer-based multifunctional kitchen machines, which are expected to significantly change housing and household management in the future.





„1920 - **Margarete Schütte-Lihotzky** (January 23, 1897 – January 18, 2000) was the first female Austrian architect and an activist in the Nazi resistance movement. She is mostly remembered today for designing the so-called Frankfurt Kitchen.“

Lihotzky became the first female student at the Kunstgewerbeschule (today University of Applied Arts Vienna), where renowned artists such as Josef Hoffmann, Anton Hanak or Oskar Kokoschka were teaching. Lihotzky almost did not get in. Her mother persuaded a close friend to ask the famous artist Gustav Klimt for a letter of recommendation.

The creation of a new series of sculptures is based on kitchen appliances by the German brand **Braun**, featured at the Interbau fair in 1957 and produced during the same time as **Hansaviertel's** construction and development.



The first—and only—kitchen computer ever sold looked like something out of *Star Trek*. COURTESY COMPUTER HISTORY MUSEUM

